

PRHD2

Highly Dynamic Servo Motors

The PRHD2 electro-mechanical design features low speed and torque ripple, minimal temperature rise, high torque density and high overload capacity.

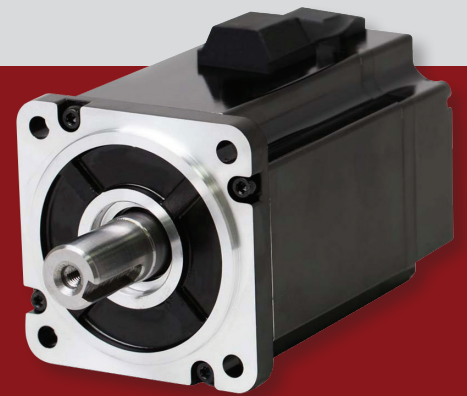
Optimal servo motor solution for high performance motion applications

PRHD2 servo motors combine excellent dynamics and torque accuracy with a compact design and high power density.

- Rated output power range of 50 W to 7.5 kW
- Rated output torque of 0.16 Nm to 48 Nm
- Torque range of up to 48 Nm (rated) and 120 Nm (peak)
- Rated speed of up to 3000 rpm
- Maximum speed of up to 6000 rpm

Broad range of motor options

- 6 frame sizes
- Winding option for 230 VAC
- Standard feedback options include absolute 20-bit single-turn or multi-turn encoder (SERVOSENSE™). Nikon® & Tamagawa® encoders available upon request
- Medium inertia motors
- Up to IP65 protection class
- Scratch-resistant motor body
- Optional holding brake
- Cable and MIL connector options
- Extended ambient air temperature: -10°C...+40°C



Key benefits

- Flange dimensions: 40 - 60 - 80 - 100 - 130 - 180 mm
- 0.16 Nm to 48 Nm rated torque
- 50 W to 7.5 kW rated output power
- Low cogging, less than 2% of nominal torque
- Low temperature rise during operation
- High motor overload capability
- Built-in 20 bit proprietary absolute magnetic encoder
- IP 67 (with oil seal)
- Optional holding brake

Matched to Servotronics CDHD/CDHD2 servo drives for optimal performance



Rating

Model	Frame Size (mm)	Voltage Options (VAC)	Power Range (W)	Rated Torque (Nm)	Peak Torque (Nm)	Max Speed (1/min)	Rotor Inertia (kg cm ²)
PRHD2-04	40	230	50-100	0,16-0,32	0,48-0,96	6000	0,03-0,05
PRHD2-06	60	230	200-400	0,64-1,27	1,90-3,80	6000	0,13-0,24
PRHD2-08	80	230	750	2,39	7,20	6000	1.61
PRHD2-10	100	230	1000-2000	3,18-6,37	11,00-21,60	5000	2,50-4,70
PRHD2-13	130	230	1000-2000	6,37-9,55	19,10-28,65	3000	7,18-12,80
PRHD2-18	180	230	3000-7500	19,1-48,00	47,75-120,00	3000	34,40-55,10

Ordering information

	PH2	-	M	04	A	2	30	0	5	S3	0	D
PRHD2 Servo Motor												
Inertia												
L	Low inertia											
M	Medium inertia											
H	High inertia											
Frame Size												
04	40 mm											
06	60 mm											
08	80 mm											
10	100 mm											
13	130 mm											
18	180 mm											
Winding Type												
A	Type A											
B												
C												
AC Bus Voltage												
2	230 VAC											
4	400 VAC											
Rated Speed												
15	1500 rpm											
20	2000 rpm											
30	3000 rpm											
Shaft & Oil seal												
0	Smooth											
1	Smooth and oil seal											
2	Keyed											
3	Keyed and oil seal											
IP Rating												
5	IP65											
Feedback Device												
S3	sensAR single turn absolute encoder 20-bit											
M3	sensAR multi- absolute encoder 20-bit											
T1	Tamagawa single turn absolute encoder 17-bit											
T2	Tamagawa multi-turn absolute encoder 17-bit											
T4	Tamagawa multi-turn absolute encoder 23-bit											
Brake												
0	No brake											
1	With brake											
Connector												
D	Amp connector											
A	MIL connector											

